

GMC

COMMANDS RESPECT



GMC

TERRAIN



DENALI | 2

SLT | 7

NIGHTFALL | 11

PERFORMANCE | 19

PROTECTION | 23

SELECTION | 29

DOWN TO THE LAST DETAIL

Every pound-foot of torque, every millimeter of fit and finish and every decibel of quiet matters. It reminds us to reimagine solutions and create rewarding driving experiences. That's why the new 2017 Terrain is a testament to design to engineering. It's a car that Commands Respect. More innovations per square inch mean you get full-size capability in a smart, connected crossover.

TERRAIN SLT IN QUICKSILVER METALLIC (left)
TERRAIN DENALI IN EBONY TWILIGHT METALLIC (right)
Vehicles shown with available equipment.

DENALI

REFINING THE REFINEMENTS.

Looking at the new 2017 Terrain Denali, it's easy to see why it's the ultimate Terrain. With its signature Denali grille and bold styling, satin-chrome door handles, mirror caps, bodyside moldings and Denali-exclusive wheels, it takes the crossover to an enhanced level of premium. After all GMC Commands Respect because it is more than just premium refinement, it's design, engineering and craftsmanship.

+ SIGNATURE DENALI GRILLE

+ BOLD EXTERIOR DESIGN WITH UNIQUE DENALI WHEELS

+ PROJECTOR-BEAM HEADLAMPS

+ PROGRAMMABLE POWER LIFTGATE



TERRAIN DENALI IN EBONY TWILIGHT METALLIC
shown with available equipment.

P. 4 | DENALI | EXTERIOR

2017 TERRAIN: COMMANDS RESPECT

Open the door to Terrain Denali and discover the result of a lot of thinking—about you. To enhance your comfort, convenience and driving experience, GMC designers ensured that style and practicality are equally represented. A generous stitches-per-inch ratio results in a detailed, premium appearance. Denali also elevates all of your tactile, visual and auditory senses. The engineering and exact execution are what make the GMC Terrain command respect. Here's proof:

+ DISTINCTIVE DENALI LEATHER-APPOINTED SEATING

+ HEATED FRONT EIGHT-WAY POWER SEATS

+ GENEROUS SECOND-ROW LEG ROOM

+ POWER TILT-SLIDING SUNROOF



TERRAIN DENALI INTERIOR IN JET BLACK
shown with available equipment.

P. 6 | DENALI | INTERIOR

SLT

OUR SCULPTORS WORK IN SHEET METAL.

The GMC design philosophy is to create styling that doesn't simply look good; it also must be purposeful. From the angle of the windshield to every line and curve, the whole idea is to disturb less air. That's why Terrain is designed to slice the wind to help create a quiet driving environment. SLT offers additional features that will catch your attention.

+ DISTINCTIVE DIMENSIONAL GRILLE

+ TRIPLE DOOR SEALS

+ 18" ALUMINUM WHEELS

+ CHROME-ACCENTED MIRROR CAPS, DOOR HANDLES AND LUGGAGE RAILS

+ LED DAYTIME RUNNING LAMPS



TERRAIN SLT IN QUICKSILVER METALLIC
shown with available equipment.

P. 8 | SLT | EXTERIOR

TUNED TO HEAR WHAT YOU'VE BEEN MISSING.

It's one thing to possess technology that keeps you connected, informed and entertained. It's quite another to be surrounded by an acoustically premium environment, thanks to features such as triple door seals. Features including the IntelliLink¹ audio system enables personalized entertainment and an available Navigation System provides reliable turn-by-turn guidance. When it comes to solitude, we don't miss a beat, so you never have to.

+ ILLUMINATED CONSOLE AND INTEGRATED CONTROL CENTER

+ LEATHER-APPOINTED SEATING

+ REAR VISION CAMERA SYSTEM

+ STEERING-WHEEL-MOUNTED RADIO CONTROLS

+ ACOUSTIC NOISE SUPPRESSION



TERRAIN SLT INTERIOR IN JET BLACK/LIGHT TITANIUM
shown with available equipment.

P 10 | SLT | INTERIOR

¹Full functionality requires compatible Bluetooth[®] and smartphone. Some devices require USB connectivity.

Safety features are no substitute for the driver's responsibility to operate the vehicle in a safe manner. The driver should remain attentive to traffic, surroundings and road conditions at all times. Read the Owner's Manual for more important safety information.

NIGHTFALL

DESIGNED FOR ANY OCCASION.

The new available Nightfall Edition is the perfect look for any occasion. Its stylish appearance comes from a charcoal grille with gloss-black surround and accents, gloss-black mirror caps, gloss-black license plate trim and charcoal luggage rails. Terrain's bold, iconic design now has a dark side. The Nightfall Edition also includes:

- + 18" ALUMINUM WHEELS WITH GLOSS-BLACK ACCENTS
- + PIONEER® PREMIUM AUDIO SYSTEM
- + BODY-COLOR DOOR HANDLES
- + PROGRAMMABLE POWER LIFTGATE (ON SLT)
- + GLOSS-BLACK FRONT AND REAR ACCENTS
- + INTELLILINK¹ COLOR TOUCH RADIO
- + REAR VISION CAMERA SYSTEM
- + NAVIGATION SYSTEM (AVAILABLE)



¹Full functionality requires compatible Bluetooth and smartphone. Some devices require USB connectivity. Data plan rates apply. ²Map coverage available in the United States, U.S. Virgin Islands, Puerto Rico and Canada.



TERRAIN NIGHTFALL EDITION IN ONYX BLACK
shown with available equipment.

DETAILS. DETAILS. DETAILS.

The proportions of Terrain were crafted with a clear understanding of what you look for in a crossover. This is a design that turns an abundance of bold details into a whole new take on the crossover. Terrain provides generous space and many ways for you to tailor its comfort and storage to fit your needs and lifestyle.



DENALI GRILLE Terrain Denali features a satin-chrome grille with a bright surround, giving it a distinctive appearance.



PROJECTOR-BEAM HEADLAMPS Terrain provides bright, focused illumination for confident visibility with integral projector-beam headlamps. For daytime illumination, Terrain offers LED daytime running lamps for excellent visibility and durability.



ALUMINUM WHEELS Terrain Denali model offers 19" ultra-bright machined aluminum wheels.



DISTINCTIVE DENALI APPOINTMENTS Contrasting stitching outlines perforated leather-appointed seating, with an embossed Denali logo on the front seats.



COMFORTABLE SEATING Standard on SLT[®] and Denali, both the driver and front passenger enjoy the comfort of an eight-way power seat with power lumbar. And to help warm you up quickly, available front heated seats can be activated when you use the available remote start.



STORAGE The interior features an oversized glove box in addition to the center console that's deep enough for a laptop or tablet. There's a storage shelf under the radio, a smaller compartment under the center armrest and two-tier storage in the door panels.



ACOUSTIC LAMINATED GLASS The windshield is engineered with acoustic laminated glass to help keep road noise from entering the cabin.



TRIPLE DOOR SEALS Airtight door seals on all four doors not only help baffle unwanted road noise, but also minimize air leaks for a quieter interior.



PROGRAMMABLE POWER LIFTGATE Terrain offers a programmable power liftgate. It opens and closes with the touch of a button to the programmed height (SLT and Denali only).



ACOUSTICS AND NOISE SUPPRESSION The windshield angle, body shape and mirrors are designed to help manage airflow to reduce wind noise.



LOW ACCESS HEIGHT The floor is at a lower, car-like height, making it easy to enter and exit as well as load large or heavy items. With the second-row seats folded down, Terrain opens up 1809.6 liters of available cargo space.¹



AMBIENT LIGHTING The center stack is illuminated with warm, red ambient lighting.

¹Cargo and load capacity limited by weight and distribution.



TERRAIN DENALI INTERIOR IN JET BLACK
shown with available equipment.

COMMAND AND CONTROL.

From behind the wheel of Terrain you have a direct line of sight to gauges, easy fingertip access to controls and voice command of available entertainment and communication functions. This allows you to focus on the driving experience.

- + INTELLILINK¹
- + COLOR TOUCH AUDIO SYSTEM
- + THE CONVENIENCE OF REMOTE START (AVAILABLE)
- + BLUETOOTH[®] SMARTPHONE INTEGRATION



¹Full functionality requires compatible Bluetooth and smartphone. Some devices require USB connectivity. Data plan rates apply. ²Go to my.gmc.com/learn to find out which phones are compatible with the vehicle.

IN TOUCH. OUT IN THE WORLD.

Terrain offers all the technology you need to stay connected, entertained and mobile.

INTELLILINK¹ Standard on all trims, IntelliLink provides smartphone integration and voice-activated control of your communication and entertainment selections. This includes making a call, changing the station, or accessing your music library.



NAVIGATION SYSTEM The available NAV system, which includes IntelliLink,¹ adds multiple map views.



REMOTE VEHICLE START Start and cool the cabin to your preset temperature from up to 200 feet away with this feature. SLE-2, SLT and Denali models can begin heating or cooling the interior based on exterior temperature, and also turn on heated seats, the rear defroster and outside heated side-view mirrors.



USB CONNECTIVITY Plug into the USB port and control most of your MP3 music player's functions with steering-wheel-mounted radio controls.



PIONEER[®] PREMIUM SOUND

The available Pioneer system allows you to hear your favorite music as the artist intended. With the help of eight strategically placed speakers, this available sound system fills the interior with 250 watts of premium sound.



STEERING-WHEEL-MOUNTED CONTROLS

Change stations, adjust volume or search the audio system with your fingertips. Also included are Bluetooth² controls.

¹Full functionality requires compatible Bluetooth and smartphone. Some devices require USB connectivity. Data plan rates apply. ²Go to my.gmc.com/learn to find out which phones are compatible with the vehicle.

PERFORMANCE

HANDLES CURVES, STRAIGHTAWAYS AND YOUR EXPECTATIONS.

Terrain's chassis and suspension tuning provide nimble maneuvering in and around town. That's exactly why it's a car that is always Ready For Anything.

+ ELECTRONIC POWER STEERING (2.4L MODELS)

+ INTELLIGENT AWD SYSTEM (AVAILABLE)

+ AVAILABLE 3.6L V-6 WITH CLASS-LEADING 301 HP

+ DENALI'S ADVANCED FRONT SUSPENSION WITH DUAL-FLOW VALVING

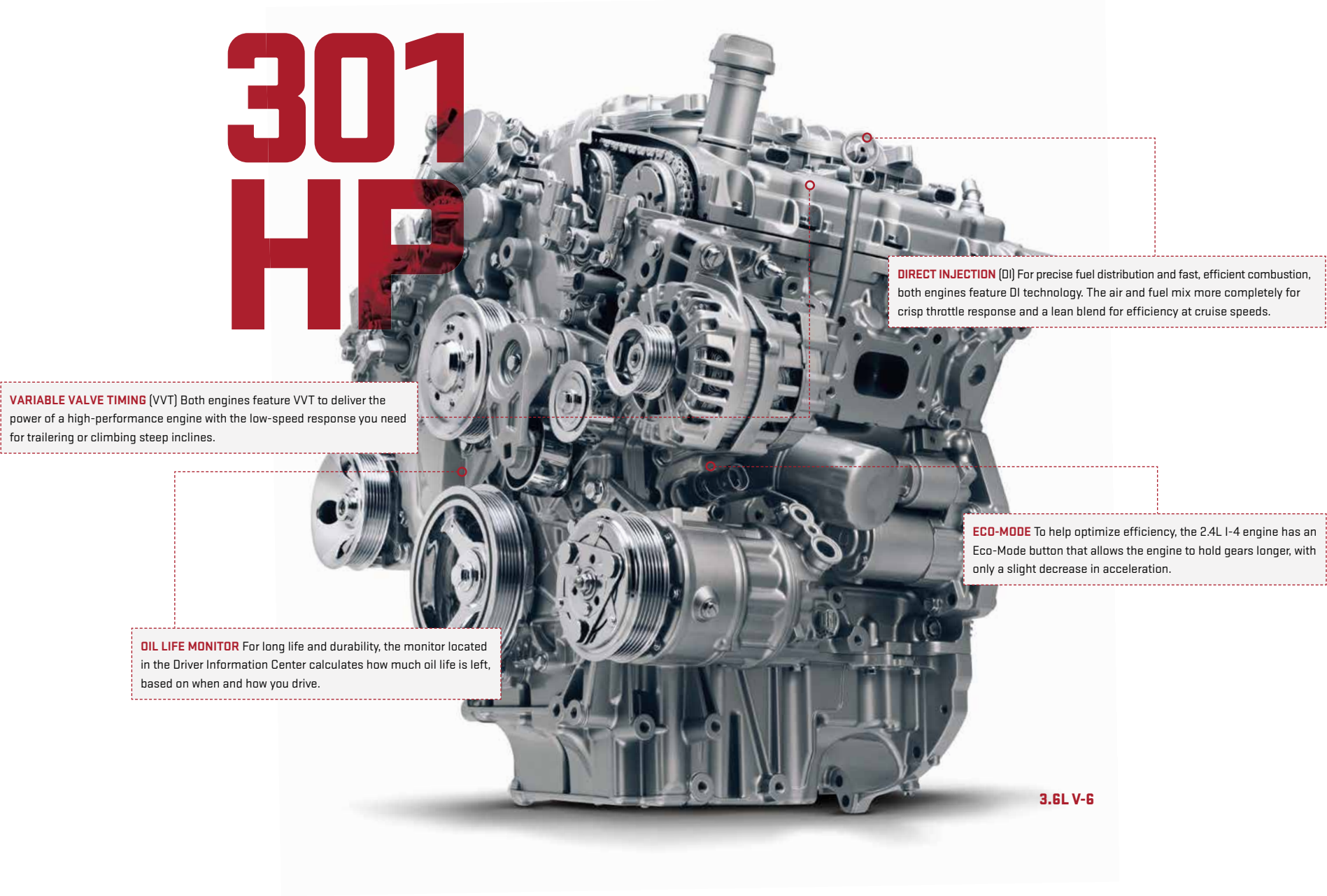
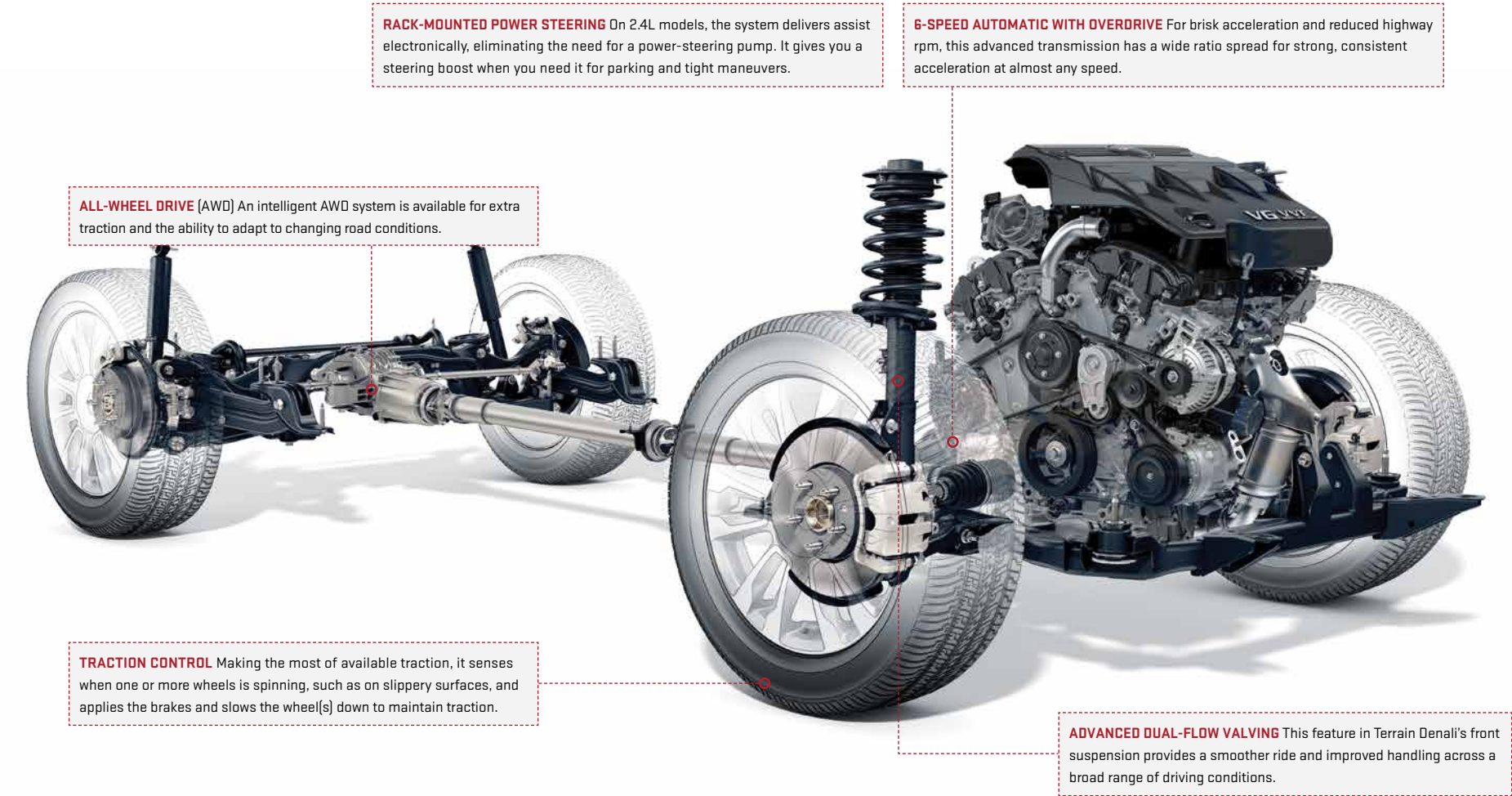


TERRAIN DENALI IN EBONY TWILIGHT METALLIC
shown with available equipment.

P. 20 | PERFORMANCE

ROADS. WEATHER. EFFICIENCY. CONSIDER THEM HANDLED.

Terrain's engineering allows you to handle the unexpected and always be Ready For Anything. With traction control and available all-wheel drive, even when road and weather conditions turn challenging, you're still in command. Terrain offers two sources of power: The 2.4L I-4 is standard, or there's the available 3.6L V-6 that generates the most horsepower in its class, 301 hp.



PROTECTION

INSTEAD OF WHAT IF, WHAT IF IT DIDN'T HAPPEN?

To help increase your awareness of surrounding traffic, Terrain offers intuitive driver-assist technologies. They're constantly on guard, ready to help you through adverse driving conditions. Safety features are no substitute for the driver's responsibility to operate the vehicle in a safe manner. The driver should remain attentive to traffic, surroundings and road conditions at all times. Read the vehicle Owner's Manual for more important safety information.

ULTRASONIC REAR PARK ASSIST Uses ultrasonic sensors to help alert you when you may be approaching obstacles behind Terrain at low speeds.

SIDE BLIND ZONE ALERT AND REAR CROSS TRAFFIC ALERT Available Side Blind Zone Alert uses radar to monitor blind spots, alerting you to vehicles in adjacent lanes to help reduce the risk of a collision. While in reverse, the available Rear Cross Traffic Alert system alerts you to vehicles approaching from the left or right.

LATCH CHILD SEAT ANCHORING SYSTEM Lower Anchors and Top tethers for Children (LATCH) enables a child seat top tether strap to be attached to limit movement in a forward crash, helping reduce the chance of injury.

SIDE-IMPACT AIR BAGS¹ To help protect the driver and front passenger in a side-impact collision or rollover, Terrain is equipped with side-impact and head curtain air bags².

STABILITRAK STABILITY CONTROL SYSTEM To help you stay in control when road surfaces are loose, snowy, icy, wet or uneven, StabiliTrak monitors how Terrain is responding to your steering and braking commands.

FORWARD COLLISION ALERT AND LANE DEPARTURE WARNING Available Forward Collision Alert provides an audible and visual signal if you are rapidly approaching another vehicle and it appears a collision may be imminent. Available Lane Departure Warning alerts you if you wander from your lane without using your turn signal.

REINFORCED STEEL SAFETY CAGE A robust body-frame-integral structure is engineered to help maintain the integrity of the passenger compartment in the event of a collision.

¹A NOTE ON CHILD SAFETY: Always use safety belts and the correct child restraint for your child's age and size, even with air bags. Even in vehicles equipped with the Passenger Sensing System, children are safer when properly secured in a rear seat in the appropriate infant, child or booster seat. Never place a rear-facing infant restraint in the front seat of any vehicle equipped with an active frontal air bag. See your vehicle Owner's Manual and child safety seat instructions for more safety information.
²Air bag inflation can cause severe injury or death to anyone too close to the air bag when it deploys. Be sure every occupant is properly restrained with seat belts. See the Owner's Manual for more airbag information

ACCESSORIES

THE ICING.

Available individually or as part of a package, GMC Accessories are the best way to take Terrain's iconic design and add your own personal style. Of course, they're engineered and tested to meet the Ready For Anything standards of your Terrain.



ROOF RACK CROSS RAIL PACKAGE These cross rails add function and style to the factory roof rack of your Terrain. The cross rails are the base mount for a variety of cargo management accessories.



CHROME DOOR HANDLES These outside door handles replace the production handles to give your Terrain a stylish and personalized look.



CHROME FUEL DOOR Help your Terrain stand apart with this distinctive chrome fuel door.



OUTSIDE REARVIEW MIRROR COVERS Add a stylish look to your Terrain with these chrome mirror covers.



CARGO-AREA PREMIUM ALL-WEATHER FLOOR MAT This deep-ribbed all-weather cargo mat provides superior protection for the cargo area of Terrain.



CARGO ORGANIZER This durable, flexible, collapsible cargo organizer has multiple compartments, allowing you to carry lightweight items of various sizes. Can be folded flat or removed from the vehicle as needed.

TRAILERING EQUIPMENT PACKAGE This structural welded steel hitch features a standard 1.25" receiver to fit most ball-mount assemblies and includes a wiring harness.

MOLDED SPLASH GUARDS Custom-molded splash guards fit directly behind the wheels. Rear guards feature the GMC logo.

TABLET HOLDER Second-row passengers can enjoy the convenience of using tablets on the road with this holder. It securely attaches to the driver or front-passenger head restraint posts to hold a single tablet against the seatback in either portrait or landscape mode.

CARGO SECURITY SHADE Conceal your possessions in the cargo area with this retractable cargo shade.

CARGO NET It attaches easily to the sides of your cargo area to keep small, light items neat and handy while in transit.

CARGO AREA CLOSE-OUT PANEL Create a flat, easy-to-load cargo area regardless of the rear-seat position. The panel bridges the gap between the cargo floor and the rear seatback.

PROTECTION PACKAGE (VQG)
+ All-weather floor mats
+ Custom-molded splash guards

CARGO CONVENIENCE PACKAGE (VQR)
+ Cargo organizer
+ Cargo security shade
+ Cargo net

COLOR AND TRIM

ACCENTS



Refined Silver Metallic



Smoked Mahogany Wood Tone

INTERIOR COLORS AND SEATING SURFACES



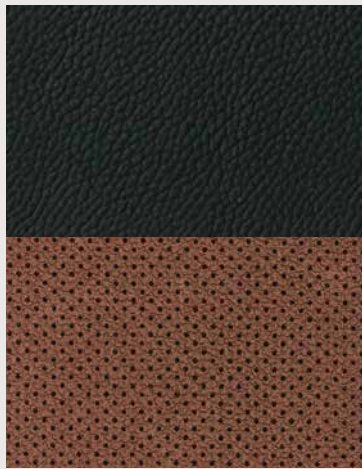
Jet Black/Light Titanium Premium Cloth¹



Jet Black/Jet Black Premium Cloth¹



Jet Black/Light Titanium Perforated Leather-Appointed¹



Jet Black/Saddle Perforated Leather-Appointed¹



Jet Black/Jet Black Perforated Leather-Appointed¹



Jet Black/Light Titanium Perforated Leather-Appointed²



Jet Black/Jet Black Perforated Leather-Appointed²

MODELS

SLE	●	—	○	○	—	—	—	—	—
SLT	●	—	—	—	○	○	○	—	—
DENALI	●	●	—	—	—	—	—	○	○

KEY ● STANDARD ○ AVAILABLE — NOT AVAILABLE

EXTERIOR COLORS



Ebony Twilight Metallic³



Summit White⁴



Graphite Gray Metallic^{3,4}



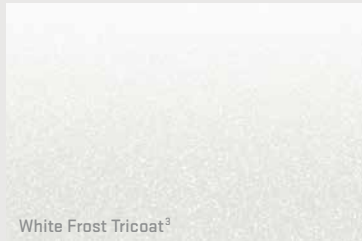
Crimson Red Tintcoat^{3,4}



Onyx Black^{4,5}



Quicksilver Metallic³



White Frost Tricoat³



Dark Sapphire Blue Metallic^{3,5}



Slate Blue Metallic^{3,5}

All colors are basecoat/clearcoat for high-gloss and durable finish. See dealer for more details. ¹Includes red accent stitching. ²Includes Titanium accent stitching. ³Extra-cost color. ⁴Available with Nightfall Edition Package. ⁵Not available on Denali trim.

SELECTION

CHOOSE YOUR STYLE.

Building a car that Commands Respect means engineering every inch of it from the ground up - including the wheels it rides on. That's why you'll find a selection of specially designed GMC wheels in a range of styles. Your dealer can provide additional wheel availability details.



18" MACHINED ALUMINUM
WITH PAINTED ACCENTS (REY)
Standard on SLE-1, SLE-2 and SLT



18" ALUMINUM WITH GLOSS-BLACK
ACCENTS (RRT)
Included with available Nightfall Edition
Package on SLE-2 and SLT



19" ULTRA-BRIGHT MACHINED ALUMINUM
WITH PAINTED ACCENTS (RGB)
Standard on Denali

TERRAIN SPECIFICATIONS

TRIM LEVELS	SLE-1	SLE-2	SLT	DENALI
MECHANICAL				
ALTERNATORS 120 amps	●	●	–	–
155 amps. Included with 3.6L V-6 Variable Valve Timing (VVT) direct-injection engine.	–	○	●	●
BATTERY 525 cold-cranking amps with rundown protection. Included with 2.4L I-4 VVT direct-injection engine.	●	●	–	–
615 cold-cranking amps with rundown protection. Included with 3.6L V-6 VVT direct-injection engine.	–	○	●	●
BRAKES 4-wheel antilock, 4-wheel disc	●	●	●	●
DRIVETRAINS Front-Wheel Drive (FWD)	●	●	●	–
All-Wheel Drive (AWD)	○	○	○	●
ENGINES 2.4L I-4 VVT direct injection, 16-valve 4-cylinder; 182 hp, 172 lb-ft of torque	●	●	–	–
3.6L V-6 VVT direct injection; 301 hp, 272 lb-ft of torque	–	○	●	●
EXHAUST Single	●	–	–	–
Dual with premium tips. Included with 3.6L V-6 VVT direct-injection engine.	–	○	●	●
STABILITRAK Vehicle stability enhancement system.	●	●	●	●
STEERING Power with variable electric assist	●	●	–	–
Power with hydraulic assist. Included with 3.6L V-6 VVT direct-injection engine.	–	○	●	●
SOFT-RIDE SUSPENSIONS Front independent with strut-type coil springs	●	●	●	●
Rear independent trailing arm with 3 lateral locating links, coil springs	●	●	●	●
Enhanced ride and handling with dual-flow front dampers	–	–	–	●
TRACTION CONTROL				
TRANSMISSION 6-speed automatic	●	●	●	●
SEATING				
SEATS Premium cloth	●	●	–	–
Ultrasoft perforated leather-appointed	–	–	●	–
Ultrasoft perforated leather-appointed with embossed Denali logo on front seats	–	–	–	●
Front buckets	●	●	●	●
60/40 split rear bench, 3-passenger with Multi-Flex manual fore/aft adjustment and recline feature	●	●	●	●
Heated driver and front-passenger seats.	–	○	●	●
D way manual fore/aft adjuster, power lumbar and power seat height (up/down)	●	–	–	–
Driver 8-way power seat adjuster and power lumbar	–	●	●	●
Passenger 8-way power seat adjuster and power lumbar.	–	–	●	●
INSTRUMENTATION AND CONTROLS				
CRUISE CONTROL	●	●	●	●
INSTRUMENTATION Includes speedometer, single trip odometer, fuel level, engine temperature, tachometer and Driver Information Center with compass display.	●	●	●	●
REAR VISION CAMERA SYSTEM Integrated into audio system screen. Includes dynamic grid lines.	●	●	●	●
STEERING WHEEL Comfort-grip vinyl with integrated audio and cruise controls	●	–	–	–

KEY ● STANDARD ○ AVAILABLE – NOT AVAILABLE

TRIM LEVELS	SLE-1	SLE-2	SLT	DENALI
Leather-wrapped with mounted audio and cruise controls	–	●	●	–
Leather-wrapped with smoked mahogany wood tones and mounted audio and cruise controls	–	–	–	●
Tilt and telescopic steering column	●	●	●	●
INTERIOR DETAILS				
ASSIST HANDLES Front passenger and rear outboard	●	●	●	●
AUXILIARY POWER OUTLETS 4 12-volt with covers	●	●	●	●
CLIMATE CONTROL Single-zone manual air conditioning with climate control	●	–	–	–
Single-zone automatic air conditioning with climate control	–	●	●	●
CONSOLE Front center with armrest and concealed storage	●	●	●	●
CUPHOLDERS 4 front, 4 rear, including 2 in center armrest	●	●	●	●
DEFOGGER Rear-window electric	●	●	●	●
FLOOR MATS Carpeted front and rear.	●	●	●	●
LIGHTING Theater dimming, center-mounted dome, rear cargo area and dual front map lights	●	●	●	●
Ambient lighting on integrated center stack. On SLT and Denali, includes door pulls, cupholders and door storage.	●	●	●	●
MIRRORS Inside rearview, auto-dimming	●	●	●	●
SILL PLATES Polished aluminum with front illumination	–	–	–	●
SUNROOF Power, tilt-sliding with express-open and wind deflector.	–	○	●	●
VISORS Driver and front-passenger with illuminated vanity mirrors	●	●	●	●
WINDOWS Power with driver and front-passenger express-down	●	●	●	●

OPTION PACKAGES	SLE-1	SLE-2	SLT	DENALI
CARGO MANAGEMENT PACKAGE Includes cargo cover, cargo convenience net and luggage crossbars	–	○	○	○
CHROME EDITION PACKAGE Includes chrome grille, door handles, outside power-adjustable heated, manual-folding chrome mirrors and Convenience Package	–	–	●	–
DRIVER ALERT PACKAGE 1 Includes Side Blind Zone Alert, Rear Cross Traffic Alert and Ultrasonic Rear Park Assist. On SLT, includes power programmable liftgate and Universal Home Remote.	–	○	●	●
DRIVER ALERT PACKAGE 2 Includes Forward Collision Alert and Lane Departure Warning.	–	○	○	●
MEMORY SETTINGS PACKAGE Includes memory settings for driver seat and outside rearview mirrors. On SLT, includes power passenger seat.	–	–	●	●
NIGHTFALL EDITION PACKAGE Includes charcoal grille with gloss-black surround and accents, black front and rear fascia accents with gloss-black rear license plate trim, body-color door handles, charcoal luggage rails, outside heated power-adjustable, manual-folding gloss-black mirrors and 18" aluminum wheels with gloss-black accents	–	○	○	–

¹Map coverage available in the United States, U.S. Virgin Islands, Puerto Rico and Canada. ²Full functionality requires compatible Bluetooth® and smartphone. Some devices require USB connectivity. Data plan rates apply.

TRIM LEVELS	SLE-1	SLE-2	SLT	DENALI
ENTERTAINMENT/COMMUNICATION/NAVIGATION				
COLOR TOUCH AUDIO SYSTEM AM/FM stereo, 7" diagonal touch-screen Color Interface Display, USB port, ¹ MP3 playback capability, Radio Data System (RDS) ² speed-compensated volume, auxiliary input jack and outside temperature display	●	●	●	●
INTELLILINK ³ Includes Bluetooth ⁴ streaming audio for music and select phones; hands-free smartphone integration and voice-activated technology for radio and phone. IntelliLink functionality varies by model	●	●	●	●
COLOR TOUCH NAVIGATION SYSTEM WITH INTELLILINK ³ AM/FM stereo, 7" diagonal touch-screen Color Interface Display, GPS navigation system, USB port, ¹ MP3 playback capability, RDS ² speed-compensated volume, auxiliary input jack and outside temperature display	–	○	○	●
AUDIO 6-speaker system	●	–	–	–
Pioneer® premium 8-speaker system with subwoofer and amplifier	–	●	●	●
BLUETOOTH ⁴ For phone, personal cell phone connectivity to vehicle audio system	●	●	●	●
CONVENIENCE FEATURES				
REMOTE KEYLESS ENTRY	●	●	●	●
REMOTE VEHICLE START Includes extended-range Remote Keyless Entry	–	●	●	●
EXTERIOR STYLING AND FUNCTIONALITY				
DOOR HANDLES Body-color	●	●	–	–
Bright chrome (satin chrome on Denali).	–	–	●	●
FRONT AND REAR BUMPERS Body-color	●	●	●	–
Body-color with silver painted rear skid plate	–	–	–	●
GLASS Solar-Ray deep-tinted. All windows except light-tinted glass on windshield and driver and front-passenger side.	●	●	●	●
GRILLE Charcoal with chrome surround	●	●	–	–
Charcoal with chrome surround and accents	–	–	●	–
Charcoal with gloss-black surround and accents. Included and only available with Nightfall Edition Package.	–	○	○	–
Denali-specific with chrome surround	–	–	–	●
LAMPS Halogen projector-beam headlamps	●	●	●	●
Daytime running lamps	●	–	–	–
Daytime running lamps, LED	–	●	●	●

	SLE-1	SLE-2	SLT	DENALI
LIFTGATE Manual with fixed glass	●	●	–	–
Power with programmable height control and fixed glass	–	–	●	●
LUGGAGE FEATURES Rails, charcoal	–	●	–	–
Rails, chrome inserts (satin-chrome inserts on Denali)	–	–	●	●
OUTSIDE MIRRORS Power-adjustable, manual-folding, black	–	–	–	–
Heated, power-adjustable, manual-folding, body-color	●	●	–	–
Heated, power-adjustable, manual-folding, chrome	–	–	●	–
Heated, power-adjustable, manual-folding, satin chrome	–	–	–	●
SPARE Tire and wheel	●	●	●	●
WIPERS Front and rear intermittent with washers	●	●	●	●
SAFETY AND SECURITY				
AIR BAGS ⁵ Frontal dual-stage with Passenger Sensing System and side-impact, driver and front passenger plus head curtain side-impact with rollover protection, front and rear outboard seating positions	●	●	●	●
CHILD SAFETY LOCKS	●	●	●	●
LATCH (Lower Anchors and Top tethers for Children) system	●	●	●	●
POWER DOOR LOCKS Programmable with lockout protection	●	●	●	●
SAFETY BELTS 3-point, all seating positions	●	●	●	●
DRIVER ALERT PACKAGE 1 Includes Side Blind Zone Alert, Rear Cross Traffic Alert and Ultrasonic Rear Parking Assist. On SLT, includes power programmable liftgate and Universal Home Remote.	–	○	●	●
DRIVER ALERT PACKAGE 2 Includes Forward Collision Alert and Lane Departure Warning. Requires Driver Alert Package 1.	–	○	○	●
THEFT-DETERRENT SYSTEM Includes PASS-Key III	●	●	●	●
TIRE PRESSURE MONITORING SYSTEM Does not monitor spare tire	●	●	●	●

STANDARD TECHNICAL DATA	
2.4L I-4 VVT ENGINE	
Horsepower @ rpm	182 @ 6700
Torque @ rpm (lb-ft)	172 @ 4900
Fuel delivery	Spark-ignited direct fuel injection
3.6L V-6 VVT ENGINE	
Horsepower @ rpm	301 @ 6500
Torque @ rpm (lb-ft)	272 @ 4800
Fuel delivery	Spark-ignited direct fuel injection
TRANSMISSION	6-speed automatic
STANDARD FRONT-WHEEL DRIVE (FWD)	
AVAILABLE ALL-WHEEL DRIVE (AWD)	Active AWD
BRAKES	4-wheel disc with antilock braking system
STEERING	Variable electric rack-and-pinion system (hydraulic on V-6)
BATTERY	Maintenance-free with rundown protection
STANDARD ALTERNATOR (I-4/V-6)	120 amps/155 amps
FUEL TANK CAPACITY (I-4/V-6)	68.1 Liters/75.7Liters (approx.)
EPA-ESTIMATED MILEAGE	
FWD (I-4/V-6)	9/L14/L/9/L12/L
AWD (I-4/V-6)	7/L10/L/9/L12/L
EXTERIOR DIMENSIONS (CM.)	
Overall Height	168.4 without roof rails
Overall Width	184.1
Overall Length	471.2
Wheelbase	285.8
INTERIOR DIMENSIONS (CM.)	
Head Room	Front 101.1/Rear 99.6
Leg Room	Front 104.6/Rear (max) 101.3
Shoulder Room	Front 141.5/Rear 140.5
Hip Room	Front 140/Rear 130.3
CARGO-AREA CAPACITIES (LITERS) ⁶	
Behind first row	1809.6
Behind second row	894.9

¹Not compatible with all devices. ²RDS functions only where stations broadcast RDS information. ³Full functionality requires compatible Bluetooth and smartphone. Some devices require USB connectivity. ⁴Go to my.gmc.com/learn to find out which phones are compatible with the vehicle. ⁵A NOTE ON CHILD SAFETY: Always use safety belts and the correct child restraint for your child's age and size, even with air bags. Even in vehicles equipped with the Passenger Sensing System, children are safer when properly secured in a rear seat in the appropriate infant, child or booster seat. Never place a rear-facing infant restraint in the front seat of any vehicle equipped with an active frontal air bag. See your vehicle Owner's Manual and child safety seat instructions for more safety information. ⁶Cargo and load capacity limited by weight and distribution.



SHARE YOUR GMC.

When you've been designing, engineering and building trucks for more than 100 years, you're bound to attract passionately loyal owners. Join them, and us, on [instagram.com/gmcarabia](https://www.instagram.com/gmcarabia), [facebook.com/gmcarabia](https://www.facebook.com/gmcarabia), twitter.com/gmcarabia and [youtube.com/gmcarabia.com](https://www.youtube.com/gmcarabia.com) to share your voice.



@GMCARABIA



FACEBOOK.COM/GMCARABIA



TWITTER.COM/GMCARABIA



YOUTUBE.COM/GMCARABIA



When you buy a GMC, you don't just take home a new vehicle. You also enjoy the peace of mind that makes driving your GMC a pleasant experience.

MIDDLE EAST VEHICLE TESTING

Every GMC is tested in the region, so we know it can withstand the climate. Then, before launch, we check and double-check every inch of the vehicle for optimal performance. GMC specifically develops many of its features—including its air conditioning, engine cooling systems, and paint—to perform in tough conditions. The result is a vehicle you can depend on.

BUMPER TO BUMPER 3-YEAR / 100,000 KM WARRANTY *

Every GMC comes with a comprehensive 3-year/100,000 km warranty to cover any eventuality. So wherever you are in the Middle East, you can be sure that any malfunction from defects in materials or workmanship will be taken care of.

COURTESY VEHICLE PROGRAM **

GMC strives for your convenience. In the unlikely event of a warranty repair involving extended repair times, you may be offered a suitable courtesy vehicle for your convenience.

MAINTENANCE PLEDGE

Our Maintenance Pledge is simple: every visit you make to a GMC dealer service center will be a satisfying one. Here's why:

- Our service and maintenance pricing is transparent, competitive, and comes with no hidden charges. You'll know up front how much it costs to maintain your vehicle throughout its warranty period.
- Our cost of maintenance is extremely competitive, and our service is second to none. Regular maintenance of your GMC at a GMC dealer service center will ensure it retains the highest possible resale value.
- For a scheduled maintenance service booked under appointment we guarantee same-day delivery of your vehicle—in most cases, while you wait.

ROADSIDE ASSISTANCE ***

Driving a GMC entitles you to free emergency roadside assistance and recovery 24 hours a day, 365 days a year, wherever you are in the Middle East, for a period of 4 years.

GMC PARTS

GMC's region-wide dealer network is supported by a well-stocked parts distribution center, ensuring constant availability of parts to keep your vehicle on the road.

GMC parts are priced to ensure low cost of maintenance and at the same time guarantee that you get genuine parts at competitive prices.

GMC CERTIFIED PRE-OWNED VEHICLES

All of our certified pre-owned vehicles come with the confidence of:

- A 110+ point quality inspection
- A minimum 12-month warranty
- 24-hour roadside assistance
- A 7-day exchange option

GMC CUSTOMER ASSISTANCE

Should you have any questions or concerns, our Customer Communications Center can take care of them. Simply email us at customerservice@GMCArabia.com or call +971-4-429-0352.

Visit [GMCArabia.com](https://www.GMCArabia.com) for more details.

* Conditions apply. Refer to the warranty booklet supplied with your GMC for the complete warranty policy.

** Conditions apply.

*** Not available in all countries.